

Installing the Powerband RFX75 in the EPT3600xxx Chassis (Doc Rev. 1.0)

INSTALLATION INSTRUCTIONS – For RCI manufactured 10 meter amateur transceivers (RCI, Galaxy, Superstar, Connex, General, etc.) with the EPT3600 series main circuit board.

- a) Test the transceiver as completely as possible prior to starting any installation.
- b) Turn off the radio and disconnect from all power sources.
- c) If applicable, remove the original heatsink on the back of the transceiver.
- d) Using a 1/8 inch drill bit, drill out the two holes that were used for mounting the heatsink.
- e) Drill one 3/8 inch hole centered between the other two 1/8 inch holes for the wires and coax to run through. It is recommended to drill this hole so that it does not interfere with the mounting of the original finals and driver transistors.
- f) Remove the following components from the transceiver: J30, J77, J98, L31, TR43, TR56, D86, D87, C158, C164, and C209. See Illustration A.
- g) Run the wires and coax cables through the 3/8 inch drilled hole. You will need to disassemble the fuse holder in order to fit it through the hole and then reassemble the fuse holder and secure it to the inside of the transceiver – the fuse holder is designed with this in mind and can be easily reassembled.
- h) Mount the RFX75 using the supplied hardware.
- i) RF IN Coax Connections - Solder the center conductor of the RF IN coax to the trace that connects C171 and J98 (#1A). Solder the RF IN coax shield to DC Ground (#1B). See Illustration B.
- j) RF OUT Coax Connections - Solder the center conductor of the RF OUT coax to the trace that connects L31 and C158 (#2A). Solder the RF OUT coax shield to chassis ground (#2B). See Illustration B.
- k) RX OUT Coax Connections - Solder the center conductor of the RX OUT coax to the trace that connects J30 and D15-D16 (#3A). Solder the RX OUT coax shield to DC ground (#3B). See Illustration B.
- l) Solder the RED wire to the positive (+) side of the transceiver's DC IN jack (+13.8 volts DC).
- m) Solder the BLACK wire to the negative (-) side of the transceiver's DC IN jack.
- n) Solder the ORANGE wire to the center leg of TR51 (#4). See Illustration B.
- o) Solder the YELLOW wire in the hole for C164 (Positive side). See Illustration B.
- p) Add a ground jumper as shown on the back of VR8 (#5). See Illustration B.
- q) Solder the BLUE wire to positive (+) 8 volts on transmit only (front side of R272) (#6). See Illustration B.
- r) After confirming that all wires are installed correctly, re-tune the receiver and transmitter as you would normally for the transceiver. **DO NOT SET CARRIER HIGHER THEN 15 WATTS!**

Disclaimer: CBTricks.com does not warrant the accuracy of the information contained herein nor is it responsible for any errors or omissions and assumes no liability for the content on this site.

While the CBTricks.com uses reasonable efforts to include accurate and up to date information, CBTricks.com makes no warranties or representations as to its accuracy or timeliness and assumes no liability or responsibility for any errors or omissions in the Content of this site.

<http://www.cbtricks.com>

Installing the Powerband RFX75 in the EPT3600xxx Chassis (Doc Rev. 1.0)

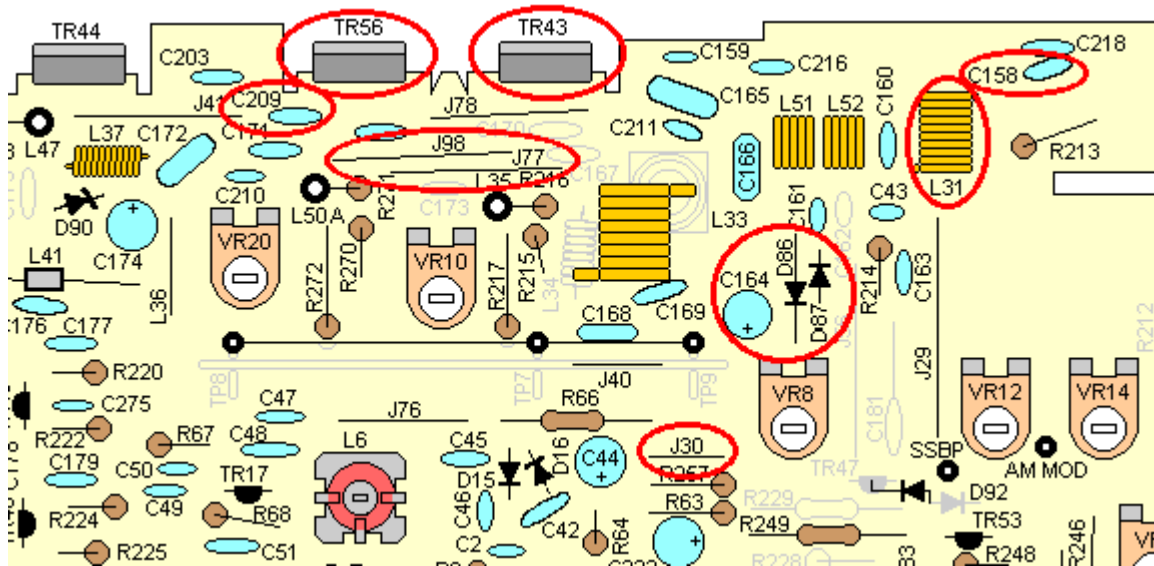


Illustration A – EPT3600* Series PCB

Circled in red are the eleven (11) parts removed in step h.

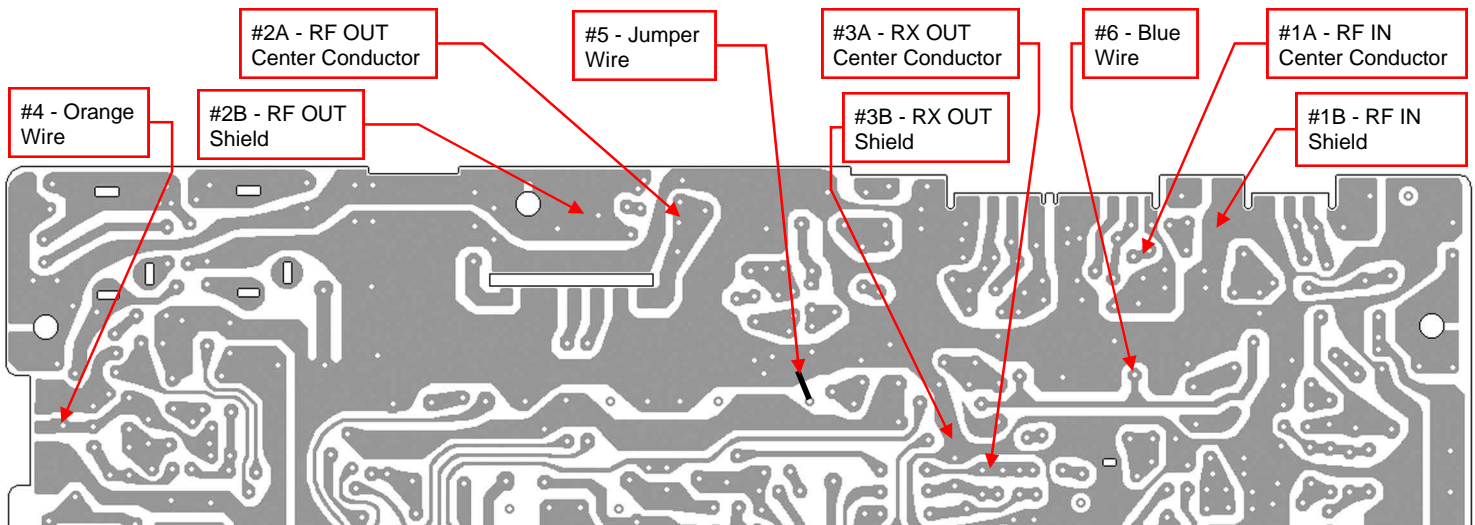


Illustration B – EPT3600* Series PCB Solder Side

Solder locations for wires in steps i through q.

Disclaimer: CBTricks.com does not warrant the accuracy of the information contained herein nor is it responsible for any errors or omissions and assumes no liability for the content on this site.

While the CBTricks.com uses reasonable efforts to include accurate and up to date information, CBTricks.com makes no warranties or representations as to its accuracy or timeliness and assumes no liability or responsibility for any errors or omissions in the Content of this site.

<http://www.cbtricks.com>